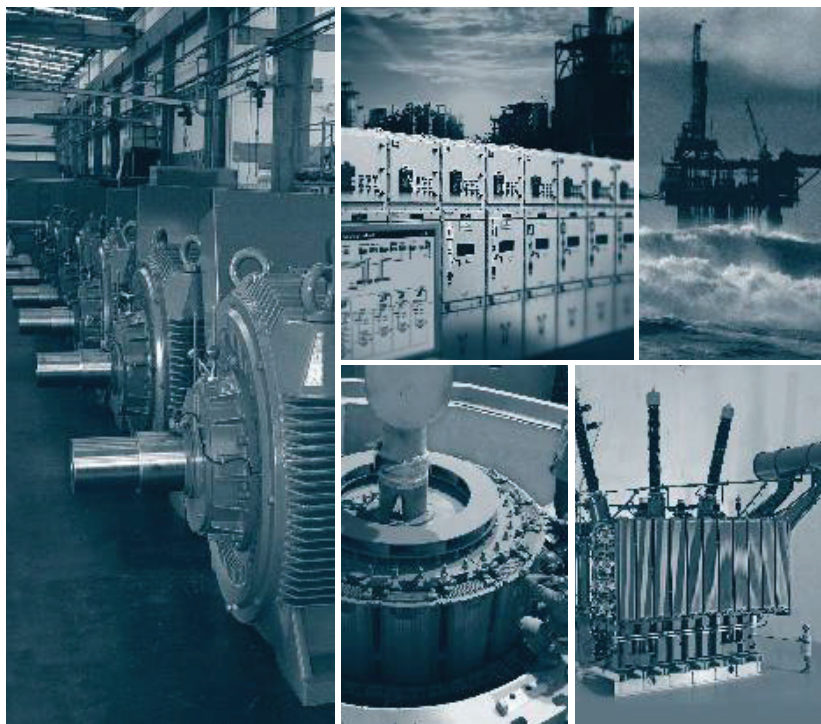


Motors, Automation, Energy, Transmission & Distribution and Coatings

This is WEG





Electric Motors

General Purpose Motors

- **W22** TEFC cast iron frame, three-phase, LV motors - 0.12 to 500 kW
- **W22** TEFC cast iron frame, three-phase, MV motors - 90 to 440 kW
- **HGF** TEFC cast iron frame, three-phase, LV and MV motors - 90 to 3,150 kW
- **ODP** cast iron frame, three-phase, LV motors - 11 to 370 kW
- **ODP** cast iron frame, three-phase, MV motors - 250 to 560 kW
- **WQuattro** TEFC cast iron frame, three-phase, LV motors hybrid (permanent magnets + squirrel cage) motors - 0.37 to 7.5 kW
- **WMagnet** TEFC cast iron frame, three-phase, LV motors permanent magnet motors - 11 to 160 kW
- **Steel Motor** TEFC and ODP steel frame, single and three-phase, LV motors - 0.12 to 15 kW

Hazardous Area Motors

- **Flameproof** TEFC cast iron frame, three-phase, LV motors - 0.37 to 330 kW
- **Brake Flameproof** TEFC cast iron frame, three-phase, LV motors - 2.2 to 18.5 kW
- **W22Xd** TEFC cast iron frame, three-phase, LV and MV motors - 75 to 1,500 kW
- **Non-Sparking (Ex nA and Ex tb)** TEFC cast iron frame, LV motors - 0.12 to 3,150 kW
- **Increased Safety (Ex e)** TEFC cast iron frame, three-phase, LV motors - 0.18 to 100 kW
- **Dust Ignition Proof (Ex tc)** TEFC cast iron frame, three-phase, LV motors - 0.12 to 300 kW

Definite Purpose Motors

- **WMining** TEFC cast iron frame, three-phase, LV and MV motors - 0.12 to 3,150 kW
- **IEEE-841** TEFC cast iron frame, three-phase, LV motors - 0.75 to 220 kW
- **Roller Table** TENV cast iron frame, three-phase, LV motors - 1.1 to 290 kW
- **Crusher Duty** TEFC cast iron frame, three-phase, LV motors - 37 to 375 kW
- **Compressor Duty** ODP steel frame, single-phase, LV motors - 0.37 to 3.7 kW
- **Cooling tower** TEFC cast iron frame, three-phase, LV motors - 0.75 to 75 kW
- **Fire Pump** TEFC and ODP cast iron or steel frame, single and three-phase, LV motors - 0.75 to 370 kW
- **Water Cooled** TEWC cast iron frame, three-phase, LV motors - 18.5 to 450 kW
- **Close-coupled Pump JMI/JP** TEFC cast iron frame, three-phase, LV motors - 1.5 to 55 kW
- **Jet Pump JMI/JP** ODP steel frame, single and three-phase, LV motors - 0.09 to 2.2 kW
- **Fan and Exhaust** TEAO cast iron frame, three-phase, LV motors - 0.12 to 330 kW
- **Wwash** TEFC cast iron frame, three-phase, LV motors - 0.12 to 0.37 kW
- **Gear Motor** TEFC cast iron frame, three-phase, LV motors - 0.12 to 11 kW
- **Brake Gear Motor** TEFC cast iron frame, three-phase, LV motors - 0.12 to 11 kW
- **Fuel Pump** TEFC cast iron frame, single and three-phase, LV motors - 0.55 to 0.75 kW
- **Smoke Extraction** TEFC and TEAO cast iron frame, three-phase, LV motors - 0.12 to 500 kW
- **Saw Arbor** TEFC cast iron frame, single and three-phase, LV motors - 2.2 to 7.5 kW
- **W22 Multispeed** (Dahlander, Double wound or Triple Speed) TEFC cast iron or aluminum frame, three-phase, LV motors - 0.18 to 120 kW
- **Brake** TEFC cast iron frame, three-phase - 0.12 to 37 kW
- **Brake** TEFC aluminum multi-mounting frame, three-phase - 0.12 to 9.2 kW

Gearboxes and Geared Motors

- Helical geared motors** - Power: 0.12 - 55 kW / Torque: 100 - 14,000 Nm / Ratio: 2.4 - 13,500
- Shaft Mounted Geared Motor** - Power: 0.12 - 30 kW / Torque: 27 - 2,800 Nm / Ratio: 0.8 - 4,000
- Parallel Shaft Geared Motor** - Power: 0.12 - 55 kW / Torque: 5,000 - 14,000 Nm / Ratio: 4 - 18,800
- Helical Bevel Geared Motor** - Power: 0.12 - 90 kW / Torque: 100 - 20,000 Nm / Ratio: 5.5 - 8,600
- Helical Worm Geared Motor** - Power: 0.12 - 7.5 kW / Torque: 50 - 1,300 Nm / Ratio: 3 - 3,400

Appliance Motors

- **Mini Motors** for HVAC applications (heat, ventilation and air conditioning systems)
- **Washing Machine motors**
- **Air Conditioning motors**
- **Electronic Gate motors**





Automation Technologies

Products

- Contactors and thermal overload relays up to 800 A (AC-3)
- Motor protective circuit-breakers up to 100 A (breaking capacity up to 100 kA)
- Enclosed starters (plastic and metallic enclosures) up to 75 kW
- Customized starters for OEM application
- Smart-relay motor-protector
- Pushbuttons, selector switches and pilot lights
- Electronic timing, monitoring and level relays
- aR and gL/gG fuses
- Miniature circuit-breakers up to 100 A (breaking capacity of 10 kA)
- Surge suppressors (up to 60 kA)
- Distribution boards
- Molded case circuit-breakers up to 1,600 A (breaking capacity up to 80 kA)
- Air circuit-breakers up to 6,300 A (breaking capacity up to 100 kA)
- Switch disconnectors up to 160 A
- Permanent capacitors for motor-run and lighting
- Capacitors for power factor correction
- Energy multimeter and power factor controller
- PLC - Programmable Logic Controllers and Human Machine Interfaces
- Low voltage variable frequency drives (power ratings from 0.18 to 2,200 kW)
- Low voltage and medium voltage motor control center (7.2 kV/50 kA)
- MVW01 - medium voltage variable frequency drives (power ratings from 400 to 12,000 kW rated for voltage range of 2.3 to 6.9 kV)
- CCW-05 medium voltage switchgear (24 kV/16 kA)
- Soft-starters (power ratings from 0,55 to 1,800 kW)
- SSW7000 - medium voltage soft-starters (power ratings from 560 to 3,550 kW rated for 6.9 kV)
- AC/DC converters (current ratings from 6 to 2,000 A)
- AFW11C/AFW11 - variable speed CFW11 mounted in panel (power ratings from 560 to 3,550 kW)
- AFW11M - variable speed CFW11 modular (power ratings from 315 to 2,000 kW)
- APW11 - variable speed CFW11 free-standing (power ratings from 55 to 400 kW)
- Servomotors and AC servoconverters (torque ratings from 1.6 to 50 Nm)
- Low voltage panels
- SEI - Integrated Electrical Systems
- Medium voltage switchgears
- ECW500 - voltage regulator for synchronous motors and generators
- Industrial sensors and power supplies
- Safety line
- Uninterruptable power supply
- Multi-drives HMI





Power Generation

Products

- Hydrogenerators
 - Outputs up to 150,000 kVA
 - Voltages up to 13,800 V
- Turbogenerators
 - Outputs up to 150,000 kVA
 - Voltages up to 13,800 V
- Synchronous Alternators - G Plus Line
 - Outputs from 7.5 kVA
 - Voltages from 220 to 13,800 V
- Low and High Voltage Induction Motors
 - Outputs up to 50,000 kW
 - Voltages from 220 to 13,800 V
- Synchronous Motors
 - Outputs up to 110,000 kW
 - Voltages from 220 to 13,800 V
- DC Motors
 - Outputs up to 10,000 kW
 - Voltages from 110 to 1,000 V
- Hydraulic Turbines
 - Power limited 120 MW
 - Francis
 - Kaplan (open pit e downstream or upstream)
 - Pelton
 - Hydro-mechanical
 - Penstock
 -
 - Stop log



Service

- Repair and up-rate service in Medium and Large size Electric Rotating Machines (Induction Motors, LV/HV Generators, DC Motors)





Power Transmission & Distribution

Products

- Power transformers and reactors
Powers: above 5,000 kVA
Rated voltage: up to 550 kV
- Industrial transformers
Powers: 500 to 5,000 kVA
Rated voltage: 15, 24.2, 36.2 or 72.5 kV
- Distribution transformers
Powers: 15 to 300 kVA
Rated voltage: 15, 24.2 or 36.2 kV
- Disconnectors
Rated voltage: 15 to 550 kV
Rated current: up to 4,000 A
Rated short-circuit current: up to 40 kA
(other currents on request)
- Dry-type (cast resin) transformers
Powers: 300 to 20,000 kVA
Rated voltage: 15, 24.2 or 36.2 kV
- Underground and submersible transformers
Powers: 150 to 2,000 kVA
Rated voltage: 15 or 24.2 kV
- Arc furnace transformers and rectifier systems
Powers: 3,000 to 150,000 kVA
Rated voltage: up to 36.2 kV
(other voltages on request)



Solutions

- Conventional and mobile substations and mobile transformers
Rated voltage: up to 550 kV
Turn-key projects

Services

- Retrofitting and rerating in power transformers
Rated voltage: up to 550 kV

Some equipment above is available on request.





Industrial Paints

Liquid Paints

- Primer paints and alkyd, epoxy and polyurethane
- High temperature and oven dry paints
- Wet surfaces epoxy paints
- Anticorrosive paints
- Marine paints
- Petrobras standardized paints
- Hydrosoluble paints



Powder Coatings

- Hybrid powder coatings
- Epoxy powder coatings
- Polyester powder coatings
- Antimicrobial powder coatings
- Zinc rich powder coatings
- Heavy metals free powder coatings
- Thermochromic powder coating
- Anti Flame powder coating



Automotive Refinishing

- Repair pastes
- Primers
- Paints
- Mixing system
- Polishing
- Water based paints



Electro Insulating Varnishes

- Impregnation varnishes
- Wire insulation enamels
- Wire enamel





The Global Solution with electric machines and automation for the industry and energy systems.

The complete solution that industry needs at the speed the market demands. From small systems to large projects, WEG takes a proactive and detailed approach to solving problems while building open and honest relationships with customers.

Covering all market segments with factories, branches and technical service located around the world, WEG is present in one way or another in everyone's day-to-day life.

Taking responsibility for the preservation of our planet and people, WEG continually invests in the technology necessary to develop more efficient and environmentally friendly electrical solutions.

Any time, any place. Your challenge is ours. This is WEG.



Global Product Certifications

Argentina		Australia	Brazil			
Canada	China					Colombia
Europe						France
Germany	Global				India	
Italy	Japan	Mexico			Netherlands	Nigeria
Russia Kazakhstan Belarus	Russia			Saudi Arabia	South Africa	
South Korea	Switzerland	UK	USA			

WEG Worldwide Operations

ARGENTINA

San Francisco - Cordoba
Phone: +54 3564 421484
info-ar@weg.net

Cordoba - Cordoba
Phone: +54 351 4641366
weg-morbe@weg.com.ar

Buenos Aires
Phone: +54 11 42998000
ventas@pulverlux.com.ar

AUSTRALIA

Scoresby - Victoria
Phone: +61 3 97654600
info-au@weg.net

AUSTRIA

Markt Piesting - Wiener
Neustadt-Land
Phone: +43 2633 4040
watt@wattdrive.com

BELGIUM

Nivelles - Belgium
Phone: +32 67 888420
info-be@weg.net

BRAZIL

Jaraguá do Sul - Santa Catarina
Phone: +55 47 32764000
info-br@weg.net

CHILE

La Reina - Santiago
Phone: +56 2 27848900
info-cl@weg.net

CHINA

Nantong - Jiangsu
Phone: +86 513 85989333
info-cn@weg.net

Changzhou - Jiangsu
Phone: +86 519 88067692
info-cn@weg.net

COLOMBIA

San Cayetano - Bogota
Phone: +57 1 4160166
info-co@weg.net

ECUADOR

El Batán - Quito
Phone: +593 2 5144339
ceccato@weg.net

FRANCE

Saint-Quentin-Fallavier - Isère
Phone: +33 4 74991135
info-fr@weg.net

GERMANY

Türnich - Kerpen
Phone: +49 2237 92910
info-de@weg.net

Balingen - Baden-Württemberg
Phone: +49 7433 90410
info@weg-antriebe.de

Homburg (Efze) - Hesse
Phone: +49 5681 99520
info@akh-antriebstechnik.de

GHANA

Accra
Phone: +233 30 2766490
info@zestghana.com.gh

INDIA

Bangalore - Karnataka
Phone: +91 80 41282007
info-in@weg.net

Hosur - Tamil Nadu
Phone: +91 4344 301577
info-in@weg.net

ITALY

Cinisello Balsamo - Milano
Phone: +39 2 61293535
info-it@weg.net

JAPAN

Yokohama - Kanagawa
Phone: +81 45 5503030
info-jp@weg.net

MALAYSIA

Shah Alam - Selangor
Phone: +60 3 78591626
info@wattdrive.com.my

MEXICO

Huehuetoca - Mexico
Phone: +52 55 53214275
info-mx@weg.net

Tizayuca - Hidalgo
Phone: +52 77 97963790

NETHERLANDS

Oldenzaal - Overijssel
Phone: +31 541 571080
info-nl@weg.net

PERU

La Victoria - Lima
Phone: +51 1 2097600
info-pe@weg.net

PORTUGAL

Maia - Porto
Phone: +351 22 9477700
info-pt@weg.net

RUSSIA and CIS

Saint Petersburg
Phone: +7 812 363 2172
sales-wes@weg.net

SOUTH AFRICA

Johannesburg
Phone: +27 11 7236000
info@zest.co.za

SPAIN

Coslada - Madrid
Phone: +34 91 6553008
wegiberia@wegiberia.es

SINGAPORE

Singapore
Phone: +65 68589081
info-sg@weg.net

Singapore
Phone: +65 68622220
watteuro@watteuro.com.sg

SCANDINAVIA

Mölnlycke - Sweden
Phone: +46 31 888000
info-se@weg.net

UK

Redditch - Worcestershire
Phone: +44 1527 513800
info-uk@weg.net

UNITED ARAB EMIRATES

Jebel Ali - Dubai
Phone: +971 4 8130800
info-ae@weg.net

USA

Duluth - Georgia
Phone: +1 678 2492000
info-us@weg.net

Minneapolis - Minnesota
Phone: +1 612 3788000

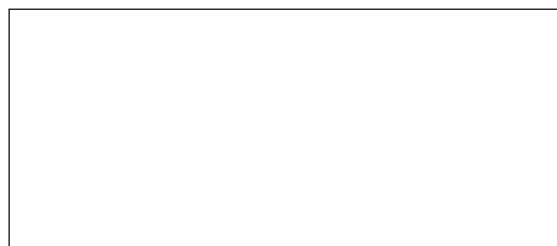
VENEZUELA

Valencia - Carabobo
Phone: +58 241 8210582
info-ve@weg.net

For those countries where there is not a WEG own operation, find our local distributor at www.weg.net.



WEG Group
Jaraguá do Sul - SC - Brazil
Phone: +55 47 3276 4000
info-br@weg.net
www.weg.net



Cod: 50019082 | Rev: 09 | Date (m/y): 07/2015
The values shown are subject to change without prior notice.