

easyE-35

CAD-Files:
www.cad.bansbach.de

Bansbach
easylift

Speed and Force:

Gear ratio	C	D	E	F	G	H
<i>easyE-35</i>	<i>12/24VDC power supply, permanent magnet motor</i>					
Force 24V (dyn. push and pull) [N]	120	400	600	900	1600	2200
Speed at maximum load [mm/s]	33	16	12	7,5	4	3
Force 12V (dyn. push and pull) [N]	-	400	600	900	1500	2000
Speed at maximum load [mm/s]	-	16	9	7,5	3,5	2,5

Current at maximum load: 12VDC = 3,6A, 24VDC = 1,8A



Axial backlash: +/- 0.5mm, General dimensional variation: +/- 1mm

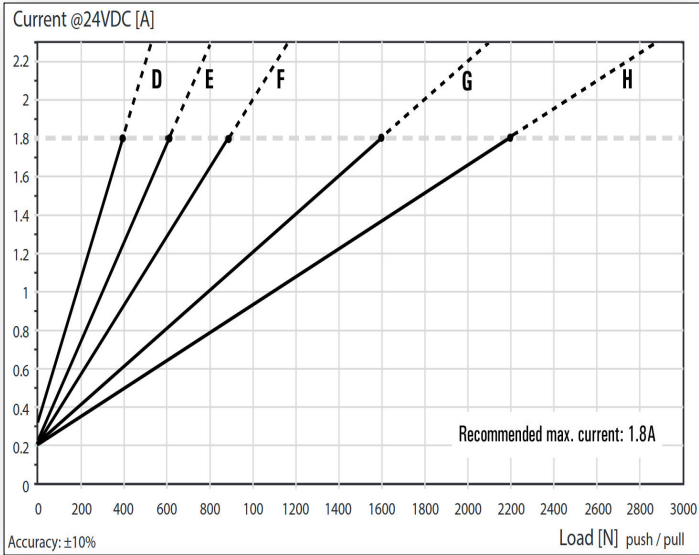
	EL	Clevis rear	Hall	UL/ EN60.601	Harsh Environment	Emergency lowering / spline
Gear ratio C, D, E, F	stroke + 160	+10	+10	+10	+11	-
Gear ratio G, H	stroke + 170					

if stroke >400mm: EL+7mm (on request), if stroke > 700mm: EL+42mm

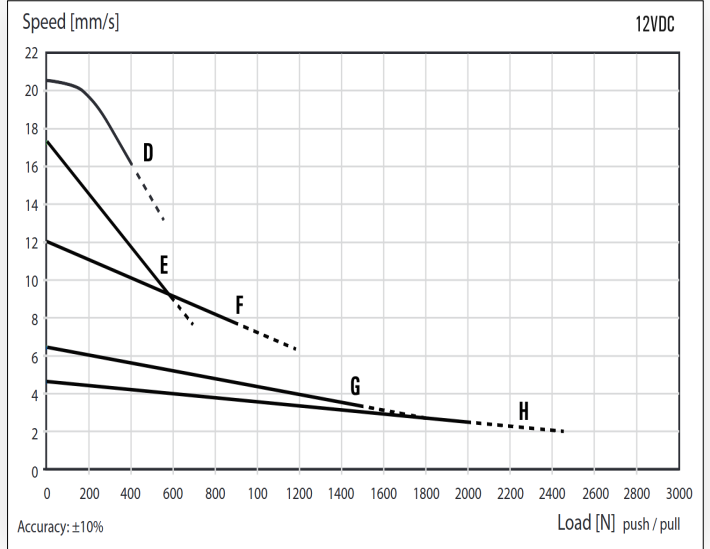
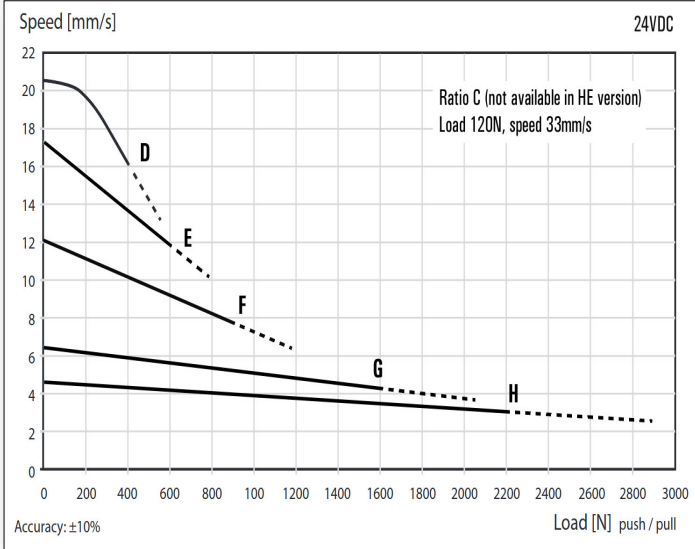
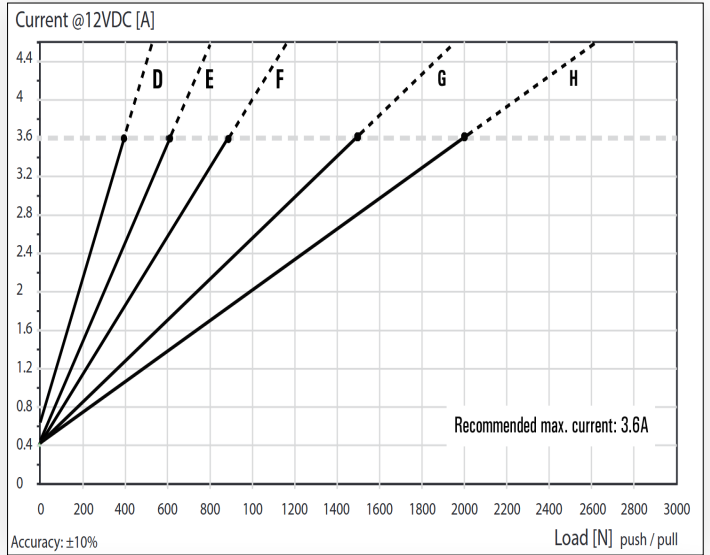
Features:

- Stroke length: 50, 100, 150, 200, 250, 300, 350, 400, 500 and 750mm (others on request)
- Cable: 1m, 2X0.52mm² (AWG20), Ø=4.8mm, black, Molex Mini-Fit Jr. 6 pin
- Bending radius: 6x cable diameter
- Materials: Motor and actuator tube are powder coated steel or stainless steel
Piston rod is Aluminium
Front and rear brackets are Aluminium or stainless steel
- Protection class: IP66 (standard), harsh environment (according to IP68 and IP69)
- Max. static load/
Self locking force: easyE-35: Rear brackets: 2000N - Alu/AISI: 5.400N
Depending on stroke length for push-applications
- Temperature: -20°C to +70°C (easyE-35 and easyE-50)
Storage: -40°C to +70°C
- Duty cycle: Max. 10% or 2 minutes in use followed by 18 minutes rest

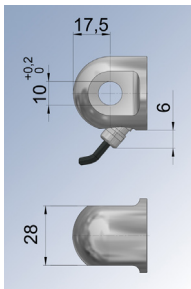
24V



12V

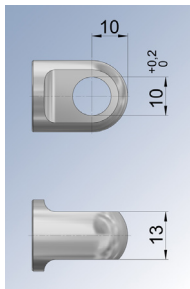


Connecting parts:



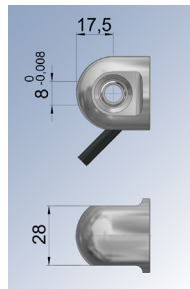
Code:
A1M (Alu)
B1M (PA)
C1M (Stainless)

Max. static load:
A1M: 5400N
B1M: 2000N
C1M: 5400N



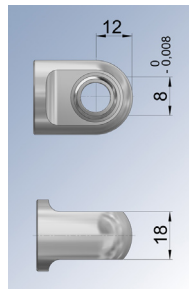
Code:
A1K (Alu)
B1K (PA)
C1K (Stainless)

Max. static load:
A1K: 5400N
B1K: 2000N
C1K: 5400N



Code:
E1M (Alu)

Max. static load:
E1M: 5400N



Code:
E1K (Alu)

Max. static load:
E1K: 5400N

The flyer is subject to technical alterations and printing mistakes.

Bansbach easylift GmbH

Barbarossastraße 8
D-73547 Lorch

Tel. +49 (0) 7172/9107-0
Fax +49 (0) 7172/9107-44

info@bansbach.de
www.bansbach.de

Bansbach
easylift

12/2022