

easyE-50

CAD-Files:
www.cad.bansbach.de

Bansbach
easylift

Speed and Force:

Gear ratio	C	D	E	F	G	H
<i>easyE-50</i>	<i>12/24VDC power supply, permanent magnet motor</i>					
Force 24V (dyn. push and pull) [N]	500	1750	2200	3100	4500	4500
Speed at maximum load [mm/s]	70	20	17	12	6	4
Force 12V (dyn. push and pull) [N]	-	1400	1700	2400	4500	4500
Speed at maximum load [mm/s]	-	14	10	6	3	3,5
<i>Current at maximum load: 12VDC = 16A (Gear ratio C-F), 14A (G), 9A (H), 24VDC = 8A (C-F), 7A (G), 4,5A (H)</i>						



Axial backlash: +/- 0.5mm, General dimensional variation: +/- 1mm

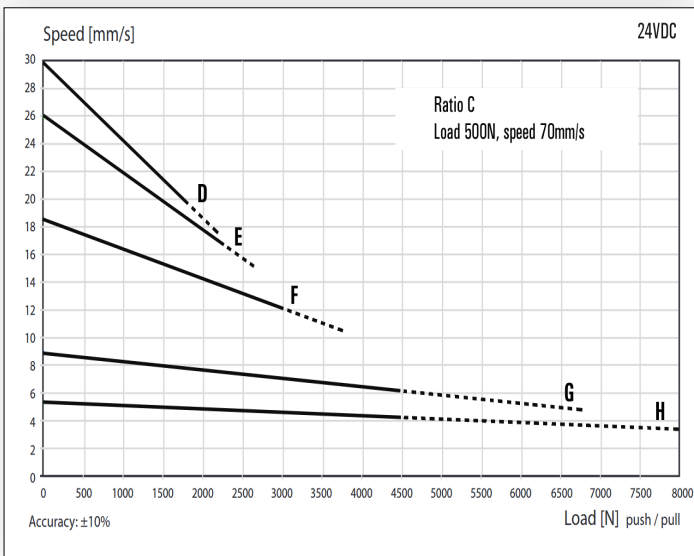
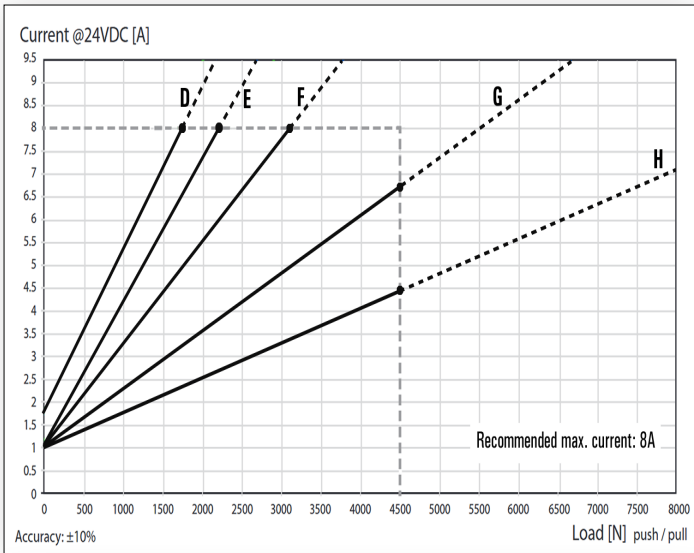
	EL	Clevis rear	Hall	UL/ EN60.601	Harsh Environment	Emergency lowering / spline
Gear ratio C, D, E, F	stroke + 240	-	+15	+15	+14	+23 / +6
Gear ratio G, H	stroke + 255					

if stroke >750mm: EL+100mm (on request)

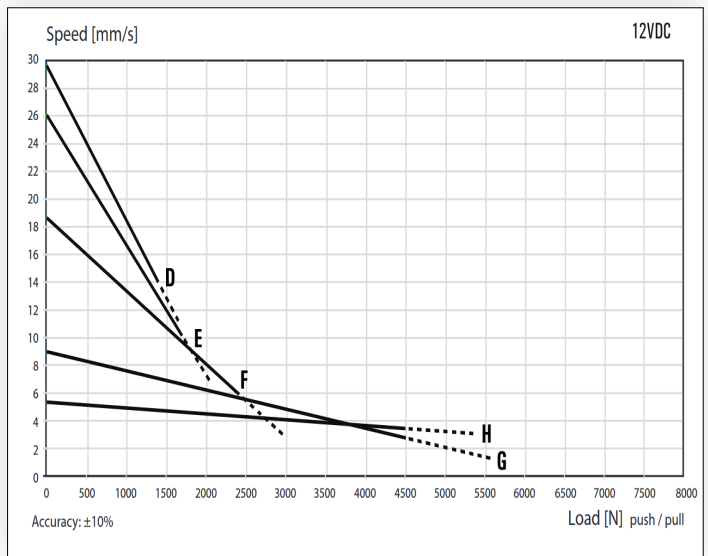
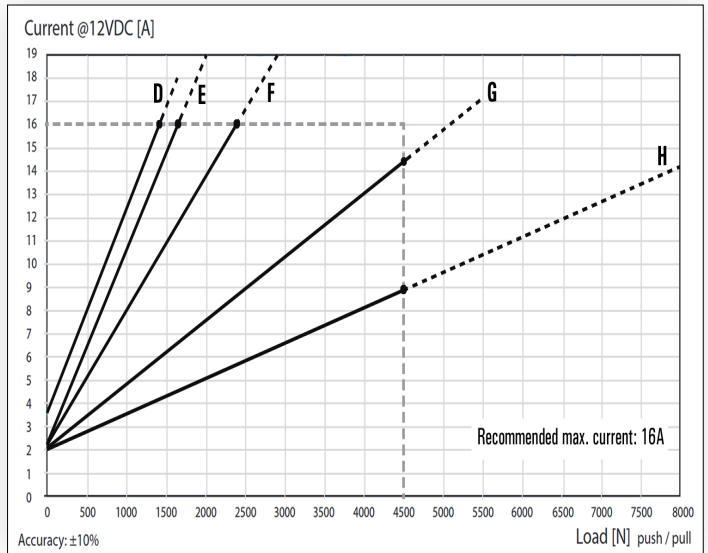
Features:

- Stroke length: 50, 100, 150, 200, 250, 300, 350, 400, 500 and 750mm (others on request)
- Cable: 1m, 2X1.3mm² (AWG16), Ø=6.4mm, black, Molex Mini-Fit Jr. 6 pin
- Bending radius: 6x cable diameter
- Materials: Motor and actuator tube are powder coated steel or stainless steel
Piston rod is stainless steel
Front and rear brackets are Aluminium or stainless steel
- Protection class: IP66 (standard), harsh environment (according to IP68 and IP69)
- Max. static load/ Self locking force: easyE-50: Rear brackets: 4700N - Alu/AISI: 16.800N
Depending on stroke length for push-applications
- Temperature: -20°C to +70°C (easyE-35 and easyE-50)
Storage: -40°C to +70°C
- Duty cycle: Max. 10% or 2 minutes in use followed by 18 minutes rest

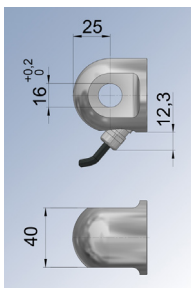
24V



12V

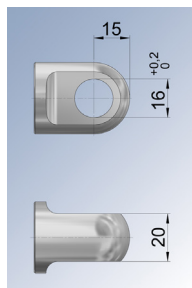


Connecting parts:



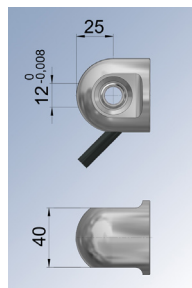
Code:
A2M (Alu)
B2M (PA)
C2M (Stainless)

Max. static load:
A2M: 16800N
B2M: 4700N
C2M: 16800N

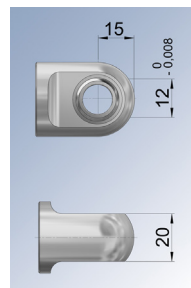


Code:
A2K (Alu)
B2K (PA)
C2K (Stainless)

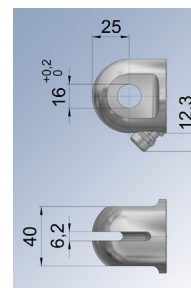
Max. static load:
A2K: 16800N
B2K: 4700N
C2K: 16800N



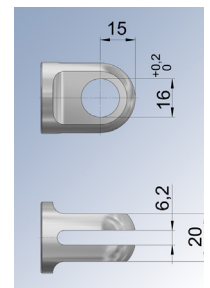
Code:
E2M (Alu)
Max. static load:
E2M: 11000N



Code:
E2K (Alu)
Max. static load:
E2K: 11000N



Code:
F2M (Alu)
G2M (PA)
H2M (Stainless)
Max. static load:
F2M: 16800N
G2M: 4700N
H2M: 16800N



Code:
F2K (Alu)
G2K (PA)
H2K (Stainless)
Max. static load:
F2K: 16800N
G2K: 4700N
H2K: 16800N

The flyer is subject to technical alterations and printing mistakes.

Bansbach easylift GmbH

Barbarossastraße 8
D-73547 Lorch

Tel. +49 (0) 7172/9107-0
Fax +49 (0) 7172/9107-44

info@bansbach.de
www.bansbach.de

Bansbach
easylift

12/2022